



 ***Luxriot***



Manual

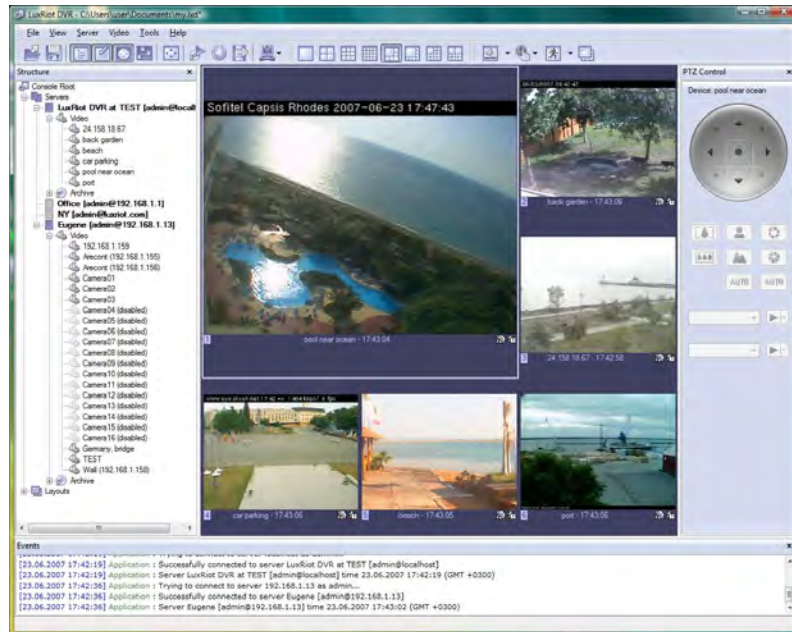
TABLE OF CONTENTS

	Overview.....	5
Chapter 1.....		6
	Frame Grabbers.....	6
	Network (IP) Cameras.....	7
	PTZ Cameras.....	8
	USB and Web Cameras.....	8
	Server.....	9
	Client.....	11
	ENTEPRISE SCALABILITY AND MONITORING.....	12
Chapter 2.....		13
	Server Installation.....	13
	Software Activation.....	14
	Server Configuration.....	16
	Application Mode.....	17
	Service Mode.....	18
	How to start and stop VMS services.....	19
	Luxriot Terminology.....	20
	Structure Pane.....	22
	Client Server Connections.....	23
	Control Server or Servers from your client application.....	24
	Multicast connection.....	25
Chapter 3.....		26
	Server Recording Properties.....	26
	Server Communication Properties.....	28
	Server Watchdog Properties.....	29
	Start Watchdog with Server-.....	29
	Enable Watchdog-.....	29
	Watchdog Operation.....	30
	Performance.....	30
	Maintenance-.....	31
	Enable Periodic Restart-.....	31
	Server User Management.....	32
	Create Users or modify existing user rights.....	32
	System/User Permissions-.....	33
	Active Directory.....	34
	Event and action management wizard.....	37

Submitting A Problem Report.....	41
Camera Status Report.....	42
Watermark Validator	43
Chapter 4.....	44
Setting up an IP camera.....	44
IP Servers.....	44
Configure your IP cameras automatically.....	44
Configure your IP cameras manually.....	45
Access Tab.....	45
Video Input Tab.....	46
Video Configuration Tab.....	46
Frame adjustment Tab.....	47
Audio Tab.....	47
Two-Way Audio.....	48
External PTZ Tab.....	49
Configure multiple cameras.....	50
CCTV Camera Configuration.....	51
Board configuration Tab.....	52
Channel configuration board Tab.....	52
PTZ Camera Properties.....	52
PTZ Protocols-Communication Settings.....	53
Video Compression	53
Sensitivity Tab-	54
Exclusion Tab-	54
Time Lapse Recording:.....	56
Motion Control Recording:.....	56
Storage Quota.....	57
Scheduled Recording Configuration.....	58
Digital Input configurations and Events.....	61
Live view pop up by motion and events.....	63
Chapter 5.....	64
Video substream (dual stream) operation.....	64
Digital PAN-Tilt-Zoom on live view.....	65
Digital PAN-Tilt-Zoom on Playback.....	65
Dewarp for fisheye cameras	66
PTZ Control Pane for Optical	69
Save Presets and Tours for PTZ Cameras.....	69
PTZ control - Point to click PTZ.....	70
PTZ control - shortcut keys.....	70
PTZ Keyboard controller.....	70
Video Adjustments.....	71
Toggle Video Amplification Pane.....	71
Audio Player Pane.....	71
Video Frame Export	72
Exclusivity Mode (Windows lock out feature).....	74
Enable Video Transfer Properties.....	75
Layouts.....	77
Layout Sequences.....	78
Chapter 6.....	82
How to Playback Video.....	82
Playback Window Structure -	82
To Navigate through the Video -	82

Fast forward & Rewind	82
Smart Search.....	83
Define motion of interest.....	83
Export Video.....	84
Export Batch.....	85
Export Snapshots.....	86
Quick snapshot save and current visible frame save.....	86
Chapter 7.....	88
 Upgrading Luxriot software to a newer Version.....	88

Overview



Luxriot is a digital video recording and remote surveillance software package for Windows. Luxriot accepts video streams from all major Network (IP) cameras and servers, Frame Grabbers and any Direct Show compatible devices including Webcams and USB cameras. This along with the Luxriot client-server architecture allows you to build fully scalable solution sizing from a single camera up to thousands of cameras.

Luxriot was designed to primarily be used to:

1. View live video streams from multiple sources locally and remotely, over the Internet.
2. Record video from multiple sources and play them back later locally or remotely
3. Export previously recorded video to preserve it and to present it as evidence.

Luxriot offers a principally new concept for VMS solutions – “One Software/Choice of Hardware”. Luxriot VMS software can be either integrated with supported hardware or acquired from a Luxriot reseller as a part of a complete digital video recording and remote surveillance solution.

Luxriot consists of two major components: VMS Server and VMS Client. The VMS Server is a behind-the-scene application that captures, processes and records video and then serves it to a local or remote VMS Client software. The VMS Client is the application that shows live and recorded video streams from a single VMS Server or multiple VMS Servers; it also allows users to configure and control VMS Server(s).

In order to better suit our customer needs and budget, Luxriot has 5 editions. These editions range from Personal to Enterprise and each edition varies in the number of allowed cameras, the number of simultaneous remote VMS Client connections as well as other limitations, or lack thereof. However, all of the Luxriot editions have the same user-friendly interface and functionality.

Luxriot VMS Personal Edition is a shareware product, which means you can try it first, and then buy it if you like it.

	Personal	Basic	Professional	Advanced	Enterprise
Maximum Number of Cameras	1	4	9	16	Unlimited
Maximum number of concurrent remote VMS Client connections	1	1	3	5	Unlimited

A		
Access Tab.....	36	
Action Summary.....	48, 57	
Advanced properties.....	46	
Analysis resolution.....	45	
Application Mode.....	19	
archive pane.....	66	
AVI.....	69	
C		
CCD cameras.....	5	
Client.....	13	
Client Server Connections.....	22	
Comart Frame Grabber.....	43	
Connections.....	26	
D		
Data Recording.....	46	
Device Title.....	42	
Directories.....	24	
E		
Enable Periodic Restart.....	29	
Enable Server Side Compression.....	44	
Events.....	8	
Exclusion Tab.....	45	
Export video.....	68	
Export wizard.....	70	
F		
Format Tab.....	45	
Frame Rate.....	5	
Frame Tab.....	43	
Full Screen.....	8	
G		
Grace Interval Seconds.....	28	
H		
Horizontal and vertical cell number.....	45	
How to Playback Video.....	66	
I		
Install Server Configuration.....	18	
IP Cameras.....	6	
IP servers.....	35	
M		
Maintenance.....	29	
Maximize.....	9	
Motion.....	66	
Motion Detection.....	45	
motion in a specific part.....	67	
Motion of interest.....	67	
N		
Navigate through the Video.....	66	
Number of Failure to Reboot.....	28	
O		
Open Configuration.....	8	
Operation.....	28	
P		
Pane.....	8	
Permissions.....	31	
play, } pause, forward, and rewind.....	66	
Playback Motion Only.....	66	
Playback Window Structure.....	66	
Priority.....		24
Problem Report.....		32
PTZ Cameras.....		7
PTZ Control.....		8
Q		
Quota Percent.....		24, 25
R		
Reboot Interval Minutes.....		28
Remote Viewing.....		13
S		
Save Configuration.....		8
Screen Footer.....		9
Sensitivity Tab.....		45
Server.....		11
Server Communication Properties.....		26
Server Recording Properties.....		24
Service Mode.....		20
Setting up an IP camera.....		35
Setup Camera.....		42
Show Motion.....		9
Smart Search.....		67
Smoothing.....		45
snapshot.....		70
State.....		27
Statistics.....		24
Stream Selection.....		9
T		
TCP Communication Properties.....		26
time lapse recordings.....		46
Toggle.....		8
Toolbar.....		8
U		
USB Cameras.....		7
User Management.....		30
V		
Video amplification.....		8
Video Compression.....		44
Views.....		9
W		
Watchdog.....		27
Web Cameras.....		7
What are Frame Grabbers.....		5
Wizards.....		9